

# SMS Gateway



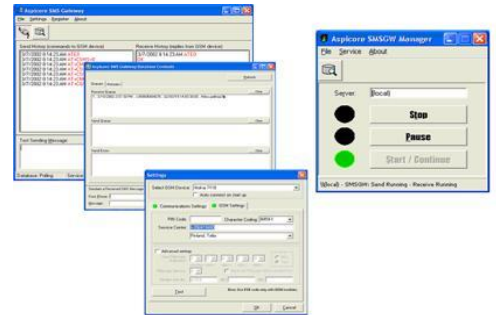
SMS Gateway Mobile Marketing  
SMS Gateway Api Premium SMS  
Shortcode Info on Demand SMS  
Voting/Polling

[Text DEMO to 27126](#) | [Resources](#) | [Client Login](#)

Search

TXTIMPACT - SMS GATEWAY

## SMS Gateway



*Enables your applications with a two-way sms gateway interface.*

### SPECIFICATIONS

#### Hardware

- Any compatible PC with at least 128 megabytes memory, 200 MB hard disk space for the time of installation, a free 9-pin COM port and a CD drive. At least 600 x 800 screen resolution recommended.

#### Operating system

 one of the following

- Windows NT 4.0 with Service Pack 6 or later
- Windows 2000 Professional or Windows 2000 Server, with SP1 or later.
- Windows XP Professional

#### GSM hardware

- Standard GSM phone with modem which can be accessed through PC's COM port. Sufficient level of implementation of ETSI standard GSM 07.05 is required.
- Recommended GSM hardware: Nokia 6100 or Nokia 5100 series phone (or operator variant) and Nokia Data Suite 3.0 with serial cable, Nokia 7110, Nokia 6210 or Nokia 6310(i) with serial cable DLR-3P, Siemens TC35i Terminal.

#### SMS protocol

- SMS Text Mode interface is used to communicate with the modem. ("AT" commands).
- Supported character sets: GSM default alphabet and ISO 8859 Latin 1
- Maximum message length 160 characters

#### SQL database

- Microsoft MSDE is included in the package
- The product is also compatible with Microsoft SQL Server 7 or 2000
- The database can be accessed from customer's other software applications to read and write SMS messages. This can be made e.g. through ODBC interface.

#### Capacity

Message throughput depends on local GSM operator's SMS service throughput and may vary during different times of day and in different roaming scenarios. Txtimpact SMS Gateway handles one message a time. Other messages are waiting in the queue either in the SMS Gateway's SQL database (outgoing messages) or in the GSM operator's service centre (incoming messages).

*We also provide software development services to tailor and integrate our SMS Gateway into customer's information systems and GSM operator's systems, if necessary.*

### SMS Gateway & Mobile Marketing

228 Park Ave S  
New York,  
NY 10003,  
USA

#### Contact via Telephone

Toll Free Number : + 1 (800) 928-6160

#### Contact via Email

Sales: [sales@TxlImpact.com](mailto:sales@TxlImpact.com)

Support: [support@txtimpact.com](mailto:support@txtimpact.com)

TXTIMPACT **Powered by - wire2air**

SMS Gateway



*SMS Gateway*

*SMS Gateway*